

ELECTRICAL GRIPPER FEED EZZ

Models: 100 | 220 – feed 80 mm – material cross section max. 100 mm²



FAST PRODUCTION

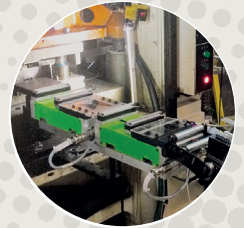
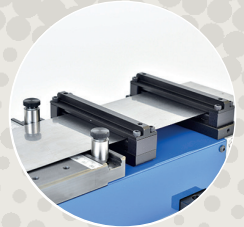
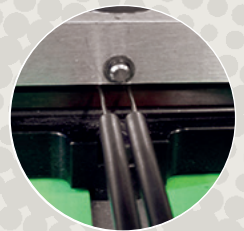
- Highly dynamic linear motor
- Double system up to 1000 strokes/min
- Powerful control for maximum accuracy

PRECISE FEEDING

- Precision linear technology with repeat accuracy 0.01 mm
- Clamp jaws of different materials and coatings
- Programmable curves and feed lengths

VERSATILE USE

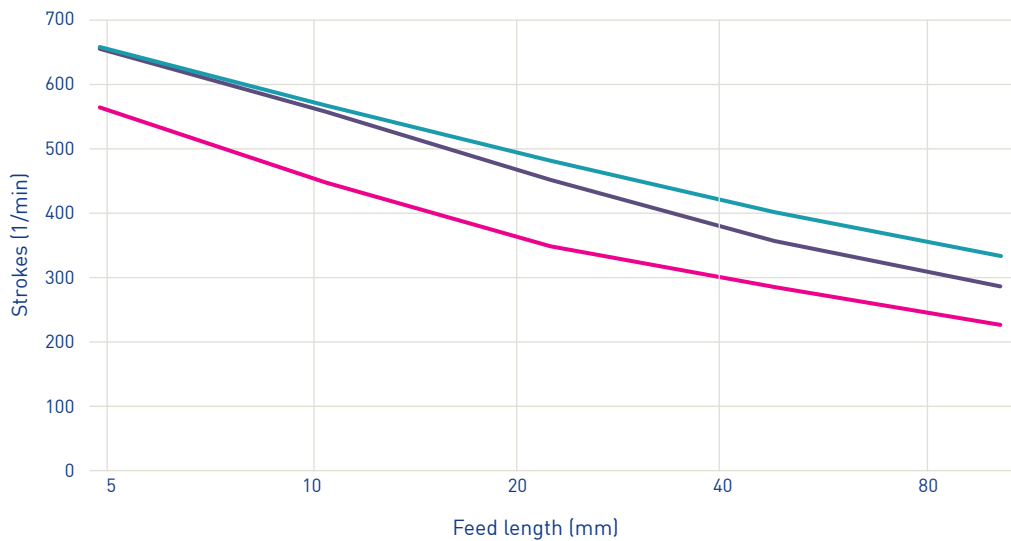
- Strip, wires, double wires
- Integrate, retrofit or synchronize with any press
- Meets the highest safety standards at a safe speed



ELECTRICAL GRIPPER FEED EZZ



PERFORMANCE



FEED ANGLE

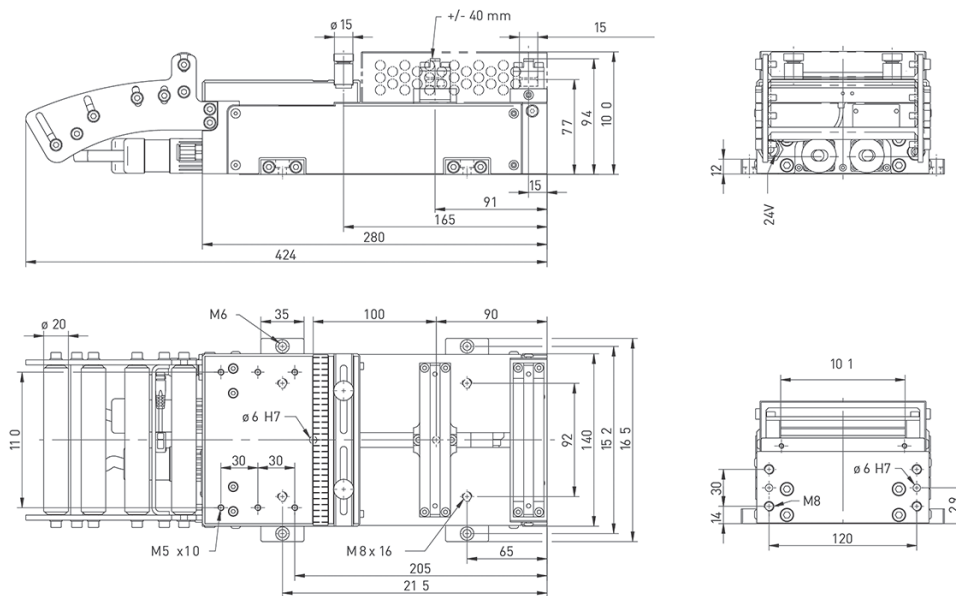
180°

120°

90°

Performance curve exemplary.
EZZ 100-080
Specific calculations on request.

TECHNICAL SPECIFICATIONS



MODEL	EZZ	100-080	220-080
Bandwidth (mm)		100	220
Feed length		0-80 mm	
Strip thickness		max. 1 mm	
Accuracy		+/- 0,01 mm	
Traction max.*		113 N	
Cross section (recommended)		max. 100 mm ²	
Clamping force at 6 bar		360 N	700 N

SWITZERLAND

Zehnder & Sommer AG
CH-3400 Burgdorf
info@zehndersommer.com
Tel +41 31 800 00 00

GERMANY

Zehnder & Sommer GmbH
DE-58452 Witten
info@zehndersommer.de
Tel +49 2302 981 60 30

zehndersommer.com
ZSswiss.com

*Depending on motor, control and supply.
Ask for a specific configuration and calculation.